

SERIE 600



Code CR0855709 **Model** 6NPC/GFE722

4 BURNERS GAS RANGE ON ELECTRIC STATIC OVEN

General Features

A line of compact cooking appliances, designed for people who do not want to give up on high performance, even in small spaces. All models are CE-approved.



COOKING TOP

Made of AISI 304 18/10 stainless steel, elegantly finished with Scotch Brite satin finish, it has rounded edges and capacious recessed areas; it is 600/650 mm long and has a modular width of 400/600/700//800/1000 mm; the series comes complete with open base supports, with cupboards or refrigerated bases. The appliances can be easily put together to build a unit, that is compact, without any gaps thanks to a covering profile that guarantees protection against leaks and therefore excellent hygiene. High flues, ergonomic knobs mounted on a sloped control panel for better visibility, make this range easy to use from the very first time.

Technical/functional characteristics

These hobs have the power of large-size models. 3.5 kW and 5.5 kW burners. The hob is moulded from a single piece of AISI 304 18/10 stainless steel with Scotch Brite finish, with ample rounded corners and large capacity to collect overflowing liquids. Enamelled cast iron pan stands ensuring that they will last over time. The gas hobs are designed with pilot flame, thermocouple and valved tap to ensure maximum safety. A light indicates when the appliance is powered. GN 1/1-size ovens static electric versions with adjustable temperature from 110 -280°C.

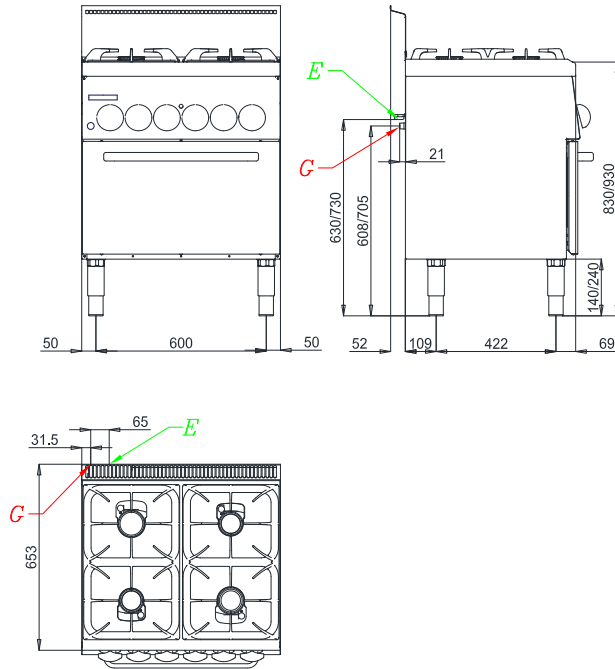
Technical Data

| DIMENSIONS | |
|-------------------------------|------|
| Width (mm) | 700 |
| Depth (mm) | 650 |
| Height (mm) | 870 |
| Gas connection (Ø) | 1/2" |
| Electric connection (V/~ /HZ) | 400 |
| Cold water connection (Ø) | |
| Hot water connection (Ø) | |

| | |
|--------------------------------|-----------------|
| Cold soft water connection (Ø) | |
| Drain (Ø) | |
| Gas power (mm) | 22.2 |
| Electric power (mm) | 4.2 |
| Plate dimensions (mm) | |
| Tank capacity (Lt) | |
| TANK DIMENSIONS | |
| Internal ovens dimension(mm) | 570 x 530 x 295 |

SERIE 600

Installation layout



| | |
|----|----------------------------|
| G | GAS CONNECTION |
| E | ELECTRIC CONNECTION |
| CW | COLD WATER CONNECTION |
| HW | HOT WATER CONNECTION |
| SW | SOFT COLD WATER CONNECTION |
| D | DRAIN |

ACCESSORIES

| Code | Description |
|-------------|----------------|
| 10405014900 | JOINT COVERING |